

WARPNINE

Annual Review

2023 - 2024



Acknowledgment of Country

We acknowledge the Whadjuk people of the Nyoongar nation, the traditional owners of the lands where our offices are located and pay respects to their elders, past, present and emerging.

Table of Contents

01

About WARPNINE

02

CEO Message

03

Chairman's Report

05

iLSTA Project Update

07

Microbiome Sub-Study

08

Microbiome and Treatment Response Sub Study

09

Advancing Cancer Care with AI Wearables

11

Biliary Tract Registry

13

On the Horizon

14

How You Can Support Us

15

Founding Supporters

16

Our Supporters

17

Financial Statements

About WARPNINE

Who We Are

WARPNINE stands for **W**estern **A**ustralia's **R**esearch into **P**a**N**creatic, gastro-**I**ntestinal, and rar**E** cancers. Founded in 2022, we are dedicated to addressing the disparities in cancer outcomes for these underfunded and under-researched malignancies. Our focus is on pioneering research and innovative treatments that offer hope and improved survival rates for patients facing these challenging diagnoses.

Vision

To significantly improve survival from pancreatic, gastro-intestinal, and rare cancers.

Mission

To bridge the gap in cancer research by funding and supporting studies that lead to early diagnosis and better treatment options and outcomes for pancreatic, gastro-intestinal, and rare cancers. Our mission is to improve the short and long-term health and well-being of those affected by these diseases.

Approach

We prioritise funding for revolutionary clinical trials and research projects that have direct and rapid benefits for patients. Through advocacy and awareness, we address inequalities in funding and research, promoting earlier diagnosis and better patient outcomes. Our multi-faceted fundraising strategy ensures the sustainability and impact of our research initiatives. We are committed to engaging with the community, keeping our supporters informed and involved in our mission.

Our Strategic Pillars

Build a Portfolio of Research to Improve Patient Outcomes

- Develop and support innovative clinical trials and research projects with the potential to significantly enhance patient survival and quality of life.

Pursue a Culture of Excellence

- Promote innovation and excellence in all aspects of our work, building capacity to support groundbreaking research and patient care initiatives.

Cultivate National and International Collaborations

- Enhance and expand partnerships with leading research institutions and organisations to leverage expertise and resources.

Grow and Support a Diverse, Multi-Disciplinary Team

- Attract and nurture diverse professionals, including researchers, clinicians, and advocates, to foster a collaborative, inclusive research community.

Maximise Research Funding

- Integrate fundraising efforts with industry support to secure and sustain essential research funding

Value Our People

- Invest in the development and well-being of our team, ensuring they are skilled, supported, motivated, and effective in their roles.

CEO's Message

As we reflect on 2024, I am filled with immense pride and gratitude for the progress we have made together at WARPINE. This year has been marked by significant advancements in our mission to improve outcomes for those affected by pancreatic, gastro-intestinal, and rare cancers. Our achievements are a testament to the unwavering dedication and support of our donors, partners, and the incredible collaborators who work with us.

One of our key milestones this year was the expansion of our research portfolio. We successfully funded several groundbreaking projects that hold great promise for improving patient survival and quality of life. These initiatives were made possible through your generous contributions and the collaborative efforts of our research partners both nationally and internationally.

Our commitment to maximising research funding has never been stronger. By embedding fundraising efforts alongside industry support, we secured vital resources to drive our mission forward. This integrated approach not only ensures the sustainability of our research projects but also amplifies our impact in the fight against these underfunded and under-researched malignancies.

Cultivating a culture of excellence and innovation has been at the forefront of our efforts. We have actively participated in workshops and seminars facilitated by peak bodies, fostering a creative and boundary-pushing environment within our collaborations. Continuous improvement remains a cornerstone of our operations, with regular reviews and refinements ensuring that we maintain the highest standards in our research and patient care practices.

Our success is also deeply rooted in the strength of our collaborative, multi-disciplinary approach.

By providing professional development opportunities and encouraging knowledge-sharing, we have created a supportive and inclusive environment. This approach not only enhances our research capabilities but also attracts top talent to our cause.

None of these accomplishments would have been possible without the generous support of our donors. Your annual contributions, major gifts, corporate partnerships, and community fundraising efforts have been instrumental in driving our mission. We are deeply grateful for your unwavering commitment to our cause.

As we look ahead to 2025, we are excited about the opportunities that lie before us. We will continue to push the boundaries of cancer research, advocate for earlier diagnosis, and strive to make a tangible difference in the lives of those impacted by pancreatic, gastro-intestinal, and rare cancers. Together, we can achieve remarkable outcomes and bring hope to countless patients and their families.

Thank you for being an integral part of the WARPINE community. Your support, dedication, and belief in our mission inspire us every day.

With heartfelt gratitude,


Meg Croucher
Chief Executive Officer

Chairman's Report

As the Chair of WARPINE and a medical oncologist, I am pleased to present this report for our 2024 Annual Review. This year has been one of significant progress and impactful achievements, driven by the unwavering support of our donors, partners, and collaborators.

Key Highlights of 2024

Strengthening Research Initiatives:

In 2024, we have made substantial advancements in our research initiatives, focusing on projects that have the potential to revolutionise the treatment and management of pancreatic, gastro-intestinal, and rare cancers. Our funded research projects are exploring cutting-edge therapies and innovative treatment modalities that aim to enhance patient survival and quality of life.

Enhancing Collaborative Networks:

This year, we have expanded our collaborative networks, forging new partnerships with leading research institutions and organisations both nationally and internationally. These collaborations have allowed us to leverage collective expertise and resources, accelerating the pace of our research and broadening our impact.

Achieving Financial Milestones:

Thanks to the generosity of our donors and the strategic efforts of our fundraising team, we have successfully secured essential funding to support our research and operational goals. Our integrated approach to fundraising has ensured a steady stream of resources, enabling us to pursue ambitious projects and initiatives.

Promoting Innovation and Excellence:

We have actively engaged in workshops and seminars facilitated by peak bodies, fostering an environment of continuous learning and innovation.

This commitment to excellence has been instrumental in maintaining the highest standards in our research and patient care practices.

Future Directions

As we look ahead to 2025, our focus will be on building upon the strong foundation we have established. Our priorities will include:

- **Expanding Research:** We will continue to invest in groundbreaking research projects that hold promise for significant advancements in cancer treatment.
- **Deepening Collaborations:** We aim to strengthen our existing partnerships and seek new collaborative opportunities to enhance our research capabilities.
- **Sustaining Funding Efforts:** We will intensify our fundraising efforts to ensure the ongoing sustainability of our initiatives, exploring new avenues for support and engagement.
- **Advocacy and Awareness:** We will amplify our advocacy efforts to raise awareness about pancreatic, gastro-intestinal, and rare cancers, promoting early diagnosis and equitable access to care.

Acknowledgments

I extend my deepest gratitude to our donors, partners, and collaborators for their steadfast support and dedication to our mission. Your contributions have been pivotal in driving our success and enabling us to make a tangible difference in the lives of those affected by these challenging cancers.

Your commitment to WARPINE inspires us to strive for excellence and continue our vital work. Together, we can achieve remarkable outcomes and bring hope to countless patients and their families.

Thank you for being an integral part of our journey.

With sincere appreciation,

Andrew Dean

Dr. Andrew Dean
Chair and Medical Oncologist
WARPINE



iLSTA Project Update: Pioneering New Frontiers in Pancreatic Cancer Treatment



Over the past year, WARPNINE has made significant strides in the fight against pancreatic ductal adenocarcinoma (PDAC), one of the most challenging cancers to treat. Our commitment to innovative research has led to the development and ongoing study of a promising new treatment combination that could change the landscape of pancreatic cancer therapy.

In our prospective study, we are exploring the use of the iRGD peptide LSTA-1 combined with immunotherapy (durvalumab) and chemotherapy (gemcitabine/nab-paclitaxel) for patients with locally advanced PDAC. The LSTA-1 peptide is designed to penetrate the dense, stroma-rich environment of pancreatic tumours, enhancing the delivery of chemotherapy drugs and promoting immune cell infiltration—critical factors in effective cancer treatment. The preliminary results from our study are highly encouraging:

- **Tumour Response:** Nearly all patients in the study have shown a significant reduction in tumour size or stabilisation of their disease, with some even achieving a complete response. This outcome suggests that the combination therapy is effectively targeting the tumour and halting its progression.
- **Immune Activation:** The treatment combination has led to a marked increase in immune cell infiltration within the tumour, which is a strong indicator of a robust immune response against the cancer. This finding is particularly promising as it points to the therapy's potential to enhance the body's own defences against the disease.
- **Survival and Quality of Life:** Patients are experiencing improved outcomes, with reduced tumour markers and enhanced quality of life. These improvements are not only extending survival but also allowing patients to maintain a better quality of life during treatment.

This groundbreaking research is a testament to the power of innovative approaches in cancer treatment and underscores WARPNINE's commitment to advancing clinical trials that offer real hope to patients.

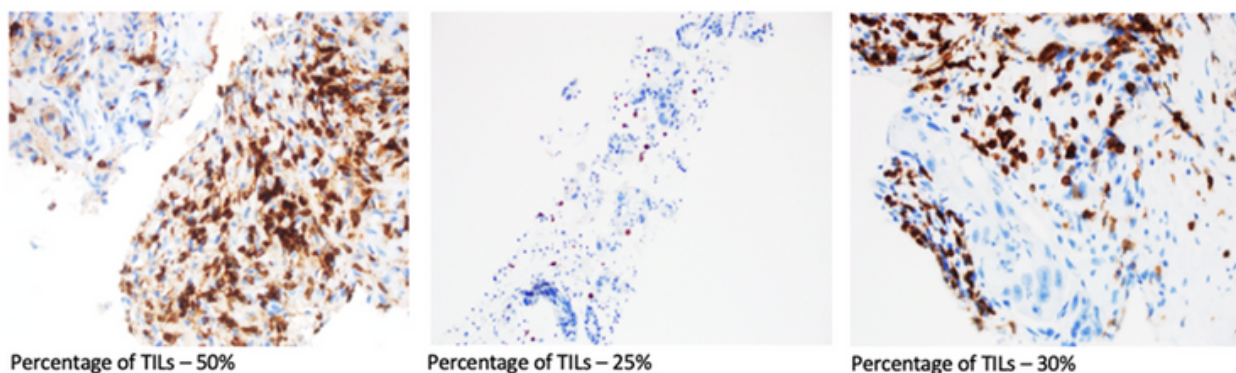
Immune Cells and Tumour Response: A Promising Outlook for the iLSTA Trial

As we continue our work in advancing treatment for pancreatic, gastrointestinal, and rare cancers, the preliminary results from the iLSTA trial are highly encouraging. Two key indicators of progress are illustrated in the accompanying figures, showing both the immune system's activation and the measurable reduction in tumour size.

Tumour Infiltrating Lymphocytes (PDL) Preliminary Results: Visualizing Immune Activation

The following CD3 slides highlight how the body's immune cells are interacting with the tumours. The dark brown regions represent Tumour Infiltrating Lymphocytes (TILs)—the immune system's soldiers actively targeting cancer cells—while the blue clumps depict tumour stroma - 'support cells' protecting the cancer cells - where immune cells have not yet infiltrated.

It's important to note that the percentage calculations for these immune responses are based on the entire slide, not just the sections pictured. While these snapshots may not fully reflect the overall percentages, they provide a striking visual of how immune activation is beginning to occur in response to treatment. These early results showcase the potential for greater immune engagement in fighting the cancer, moving us closer to more effective treatments.



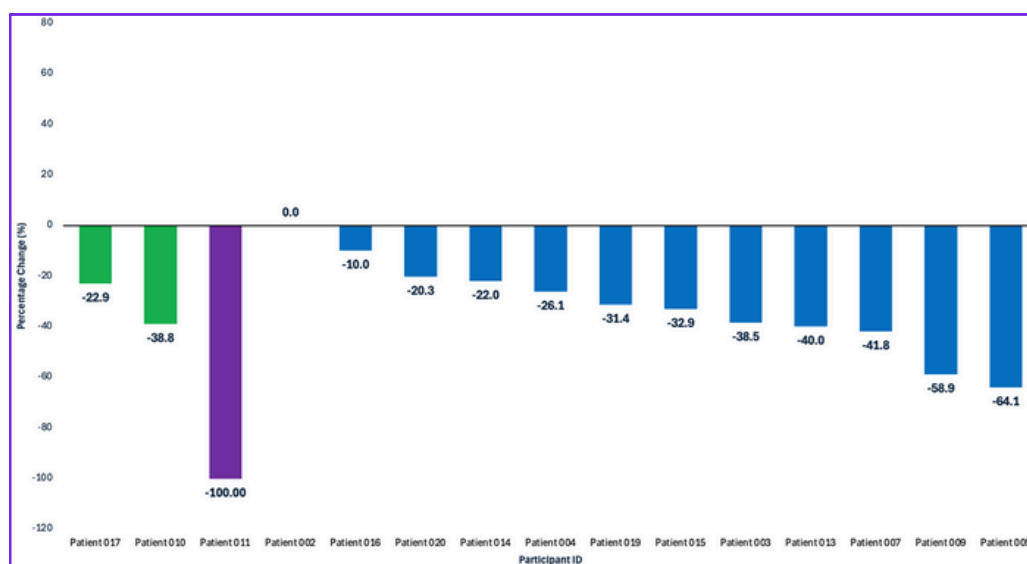
CD3 Slides

Tumour Response According to RECIST v1.1 Criteria

In addition to immune activation, we are seeing promising reductions in tumour size, as shown in the figure below. This figure presents the change in tumour size for trial participants, evaluated using the RECIST v1.1 criteria—a widely accepted standard for measuring cancer treatment response.

Each bar reflects the percentage change in tumour size for individual participants, demonstrating the varying degrees of tumour shrinkage achieved through the iLSTA treatment. The results so far show that many participants have experienced significant tumour reduction, a positive sign that this innovative combination therapy may halt or even shrink pancreatic tumours.

These findings represent a powerful step forward in our mission to develop more effective treatment options for patients facing life-limiting cancers. The combination of robust immune responses and tumour shrinkage holds great promise as we continue to evaluate the long-term benefits of the iLSTA trial.



Cohort One: Green, Cohort Two: Purple, Cohort Three: Blue

Looking Ahead: As we enter the next phase of this study, our focus will be on expanding our research, exploring new treatment combinations, and ultimately improving survival rates for pancreatic cancer patients. We look forward to sharing more updates as this project progresses.

Thank You: Your ongoing support is crucial to the success of projects like these. Together, we are pushing the boundaries of what's possible in cancer research and making a tangible difference in the lives of those affected by pancreatic cancer. We deeply thank our supporters, partners, and the entire WARPINE community. Your belief in our mission drives us to achieve more and continue our fight against these devastating diseases.

Microbiome Sub-Study: Exploring the Gut's Role in Pancreatic Cancer Treatment



As part of our ongoing commitment to pioneering research, WARPINE has been delving deeper into the complexities of pancreatic ductal adenocarcinoma (PDAC) through a focused sub-study within the broader iLSTA trial. While the iLSTA trial itself is making significant strides in enhancing drug delivery and immune responses, this sub-study is dedicated to understanding an often-overlooked factor in cancer treatment: the gut microbiome.

Recent research suggests that the bacteria living in our gut might play a crucial role in how patients respond to chemotherapy. In this sub-study, we have been investigating how the combination of chemotherapy and immunotherapy in PDAC patients affects their gut microbiome—and how these changes could influence treatment outcomes.

Key Findings:

- **Microbiome Shifts:** Patients undergoing treatment with both chemotherapy and immunotherapy have shown beneficial changes in their gut bacteria. Specifically, there's an increase in Firmicutes—bacteria known for their potential anti-cancer properties—and a decrease in Proteobacteria, which are associated with poorer treatment outcomes.
- **Correlation with Treatment Response:** These microbiome changes appear to correlate with improved treatment responses, suggesting that the gut microbiome could play a significant role in enhancing the effectiveness of the cancer therapies used in the iLSTA trial.
- **Potential for Future Treatment Enhancements:** Understanding these microbiome shifts opens up exciting possibilities for future treatments, where modifying the gut bacteria could become part of a comprehensive strategy to improve patient outcomes.

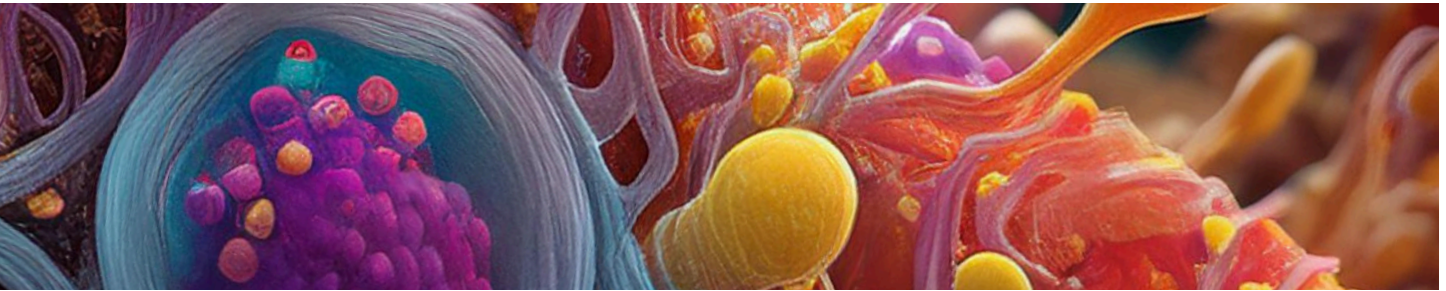
This sub-study adds a new dimension to our broader efforts within the iLSTA trial by exploring how we might harness the power of the microbiome to support and enhance cancer treatment. It represents a promising step forward in our mission to improve survival rates and quality of life for those facing pancreatic cancer.

Your support has been instrumental in making this research possible. As we continue to uncover new insights, we are reminded of the critical role our community plays in driving these advancements. Together, we are not just treating cancer—we are revolutionising the way we understand and approach it.

Next Steps: We are excited to continue this line of research with the goal of integrating these findings into broader treatment strategies that could benefit more patients in the future.

Microbiome and Treatment Response

Sub-Study: Linking Gut Health to PDAC Outcomes



As part of the broader iLSTA trial, WARPINE has embarked on a critical sub-study aimed at uncovering the connections between the gut microbiome and treatment responses in patients with pancreatic ductal adenocarcinoma (PDAC). While the iLSTA trial itself explores innovative drug combinations to enhance treatment efficacy, this sub-study focuses specifically on how gut bacteria may influence these outcomes.

Pancreatic cancer is notoriously difficult to treat, and recent research suggests that the composition of the gut microbiome—the trillions of bacteria living in our digestive system—might play a crucial role in how patients respond to chemotherapy. In this sub-study, we investigated whether certain bacterial profiles could be linked to better or worse treatment responses in PDAC patients.

Key Findings:

- **Microbial Correlation with Treatment Response:** The study revealed a trend where patients with higher levels of Firmicutes—a type of bacteria with known anti-cancer properties—generally showed better responses to treatment. Conversely, those with higher levels of Proteobacteria, which are associated with reduced chemotherapy efficacy, tended to have poorer outcomes.
- **Impact of Bacterial Diversity:** Beyond specific bacterial types, overall microbial diversity also appeared to play a significant role. Patients with a more diverse gut microbiome were more likely to respond positively to treatment, suggesting that a healthy, balanced gut environment could enhance the effectiveness of cancer therapies.
- **Potential for Personalised Treatment:** These insights open up the possibility of tailoring cancer treatments based on an individual's gut microbiome, potentially improving outcomes by adjusting the microbiome alongside traditional therapies.

This sub-study is an exciting addition to the broader iLSTA trial, offering a new perspective on how we might improve treatment outcomes for pancreatic cancer patients. By understanding the role of the microbiome in cancer therapy, we are not only advancing our knowledge but also paving the way for more personalised, effective treatments.

Next Steps: Moving forward, we aim to integrate these findings into the broader context of our research, exploring how we can leverage the gut microbiome to enhance treatment responses. The continued support of our community has been vital in enabling this research, bringing hope and new possibilities to patients and their families.



Advancing Cancer Care with AI and Wearables

In the rapidly evolving landscape of healthcare, the integration of Artificial Intelligence (AI) and wearable technology is revolutionising how we monitor and manage cancer patients. At the forefront of this innovation is our ongoing research, aimed at enhancing patient outcomes through continuous monitoring and predictive analytics.

Continuous Monitoring in Oncology

Our team has developed a sophisticated digital system equipped with wearables designed to continuously monitor the vital signs of oncology patients both in clinics and at home. This technology not only provides real-time data but also empowers healthcare providers to make timely and informed decisions. By leveraging AI, we can analyse this data to predict patient deterioration and potential infections, ensuring prompt intervention.



Collaborating with WA Hospitals

We are conducting trials in collaboration with both public and private hospitals across Western Australia to validate the effectiveness of our AI-assisted wearables. These partnerships are yielding promising results, allowing us to access data from nearly 2,900 oncology patients admitted to emergency departments. This data enables us to identify trends, such as high fever, which could serve as early indicators of complications.

Addressing Chemotherapy Toxicity

A significant focus of our research is the early detection of toxicity in oncology patients undergoing chemotherapy. Our goal is to identify the 20% of patients who develop infections and deterioration due to treatment-related toxicity. By working closely with oncology departments in WA hospitals, we aim to implement AI-assisted wearables in clinics to monitor patients continuously. Early detection of toxicity not only improves clinical outcomes but also enhances patient comfort and safety.

Enhancing Nursing Efficiency and Patient Comfort

One of the most compelling benefits of AI and wearable technology is its potential to alleviate the burden on nursing staff, particularly in the face of staffing shortages. Continuous monitoring and AI-based alerts can significantly reduce the frequency of manual vital sign checks, allowing nurses to focus on more critical tasks. This technology supports clinical decision-making, providing nurses with accurate, real-time data to inform their actions.

For patients, this means a more comfortable and less intrusive experience. The wearables allow for uninterrupted rest, as patients no longer need to be awakened every hour for vital sign checks. This not only enhances patient comfort but also contributes to better overall health outcomes through continuous, unobtrusive monitoring.

Palliative Care Innovations

In addition to monitoring general oncology patients, we are exploring the use of our technology in palliative care settings. Many palliative care patients, particularly those in advanced stages of cancer, are unable to effectively communicate their pain levels. Our study aims to detect pain and physiological parameters in these patients through wearable technology, providing a more comprehensive understanding of their needs and improving their quality of life.



Looking Ahead

The integration of AI and wearable technology in cancer care represents a transformative step forward. By continuously monitoring patients and predicting potential complications, we can intervene earlier, reduce hospital admissions, and ultimately save lives. Our research is not just about technology; it's about delivering compassionate, effective care to those who need it most.

As we continue to innovate and expand our trials, we remain committed to our vision: harnessing the power of technology to enhance the lives of cancer patients across Western

WARPNINE proudly co-funds this project in collaboration with the University of Notre Dame, Western Australia

Biliary Tract Registry: Advancing Care for Patients with Biliary Tract Cancer

The Biliary Tract Registry (BTR) project represents a significant step forward in improving the quality of care for patients with biliary tract cancer. By developing a set of comprehensive quality indicators and establishing a robust registry, we aim to ensure that every patient receives optimal care based on the latest evidence and expert consensus.

This collaborative project unites key stakeholders such as consumers, the broader biliary tract cancer community, the PANCARE Foundation, and WARPINE, along with industry partners like AstraZeneca, Servier, Taiho and Specialised Therapeutics. Additionally, we are working closely with AGITG and the NHMRC Clinical Trials Centre to operationalise the project. The combined expertise and commitment from these organisations and our extensive network of specialists ensure that the registry is built on a foundation of excellence and is aligned with the highest standards of care.

Throughout the year, the project has made remarkable progress. Expert working groups consisting of leading specialists across various fields, including but not limited to medical oncology, surgery, radiology, gastroenterology, liver transplantation, pathology, and more, as well as consumer representatives have been working together to develop an Australian consensus based on a review of international biliary tract treatment guidelines that will be used to standardise and improve patient outcomes across Australia.



The next aim of the project is to establish a set of clinical indicators that will form the registry and will be used to observe how real-world care aligns with evidence-based, optimal care practices. Quality indicators for the registry will be developed by gathering input from experts over several rounds, refining the consensus each time.

The impact of this project on patients is profound. By standardising care and ensuring that clinicians have access to the most current and agreed-upon best practices, we are not only enhancing the treatment experience for patients but also paving the way for better survival rates and improved quality of life. Moreover, the registry will provide invaluable data that can drive future research and innovations in the treatment of biliary tract cancer

As we continue to develop and refine these quality indicators, the BTR project will play a critical role in transforming how biliary tract cancer is managed. It will ensure that all patients receive the highest standard of care, regardless of where they are treated.

For a full list of the collaborators who have participated in the expert working groups and focus groups please email admin@warpline.org.au.



Academic Lead:
Professor John Zalcborg AO
Medical Oncologist

On the Horizon: Accelerating the Future of Cancer Research



At WARPINE, we are committed to advancing groundbreaking research by taking the most promising new concepts from the lab to the bedside. Our mission is to drive innovation and improve survival rates for patients facing some of the most challenging cancers. With a focus on delivering tangible outcomes, our upcoming projects are designed to transform treatment options and bring new hope to those who need them most. These studies, awaiting philanthropic funding, represent the next critical steps in revolutionising cancer care.

PanNETs: Exploring the Gut Microbiome in Neuroendocrine Pancreatic Cancer

Pancreatic neuroendocrine tumors (PanNETs) are rare but rising in incidence. Between 2000 and 2020, the number of neuroendocrine neoplasms (NENs) diagnosed in Australia more than doubled[1]. PanNETs often present late, leading to significantly lower survival rates for advanced stages. This study will investigate how the gut microbiome influences PanNET progression, seeking to identify new biomarkers for earlier detection and more effective, personalised treatments. With an overall five-year survival rate of 51% for neuroendocrine tumours [2], this project has the potential to improve outcomes for patients with this difficult-to-treat cancer.

Neo-GOLSTA: Enhancing Treatment for Advanced Gastroesophageal and Gastric Cancers

Patients with advanced gastroesophageal and stomach cancers face particularly poor outcomes, with five-year survival rates ranging between 20-30% [2]. The Neo-GOLSTA trial will test a combination of mFOLFIRINOX chemotherapy with LSTA1, a tumour-penetrating peptide, and immunotherapy. This combination aims to enhance drug delivery to the tumour while reducing the toxicity typically associated with chemotherapy, offering patients a more tolerable and potentially more effective treatment. If successful, this trial could set a new benchmark in the treatment of these challenging cancers [3].

iBOXOFFICE: Breakthrough Immunotherapy for Biliary Cancer

Biliary cancers, including cholangiocarcinoma, remain highly lethal, with Australian survival rates as low as 10-15%[4]. The iBOXOFFICE trial focuses on exploring a novel combination of immunotherapy and chemotherapy to improve patient outcomes. By boosting the immune system's ability to target cancer cells, this study aims to offer new treatment pathways for a cancer that currently has very limited options. The potential breakthroughs from this trial could significantly impact the way biliary cancer is treated in the future.

These "On the Horizon" projects are poised to lead the way in cancer research, but we need your support to make them a reality. By supporting WARPINE, you contribute to innovative research that could change the trajectory of cancer care in Australia and beyond.

1. Australian Institute of Health and Welfare. Neuroendocrine neoplasms incidence and survival rates. 2024. Available from: <https://www.aihw.gov.au/reports/cancer/cancer-data-in-australia>
 2. Cancer Australia. Neuroendocrine Tumours Statistics. 2022. Available from: <https://www.cancer australia.gov.au/cancer-types/neuroendocrine-tumours/overview>
 3. Australian Institute of Health and Welfare. Cancer data in Australia. 2024. Available from: <https://www.aihw.gov.au/reports/cancer/cancer-data-in-australia>
 4. Australian Institute of Health and Welfare. Cancer data in Australia: Cholangiocarcinoma survival rates. 2024. Available from: <https://www.aihw.gov.au/reports/cancer/cancer-data-in-australia>

How You Can Support Us



At WARPINE, the transformative power of your support directly impacts patient outcomes. Without the generosity of individuals like you, our mission to improve survival rates and provide earlier access to life-changing clinical trials would not be possible. Philanthropic contributions are the driving force behind everything we do—from funding essential research to delivering innovative treatments. Here's how your support plays an integral role in changing lives:

Fundraise for WARPINE

Your fundraising efforts can make a profound difference in the lives of patients battling pancreatic, gastrointestinal, and rare cancers. By creating a personalised fundraising page, you are helping us fund pioneering trials that offer new hope where traditional treatments have failed. Every dollar you raise moves us closer to providing breakthrough therapies that can extend and improve patients' lives.

Tributes

Make your donation a personal statement by honouring someone special or marking a significant life event. Your tribute will support targeted research that directly impacts patients, helping to improve outcomes and give families precious time.

- **Gifts in Memory:** Honour the legacy of a loved one by funding cutting-edge research and clinical trials that bring real hope to future generations of cancer patients.
- **Gifts in Celebration:** Transform birthdays, anniversaries, or other celebrations into opportunities to fund critical cancer research. Instead of gifts, ask for donations that contribute directly to improving the lives of patients in need of new treatment options.

Corporate Support

Corporate partnerships can play a vital role in advancing research that has a direct impact on patient outcomes. Whether through tax-deductible donations or strategic collaborations, your business can support the development of more effective therapies, helping us provide new hope to patients who need it most.

Gifts in Wills

Leave a Lasting Impact on Patient Care

By including WARPINE in your Will, your legacy will transform the future of cancer treatment. Your contribution enables us to plan confidently and continue developing the groundbreaking research that leads to earlier diagnoses and more effective treatments. Through our partnership with *Willed*, creating your Will online is seamless and efficient, ensuring that your legacy has a lasting impact on improving patient outcomes.

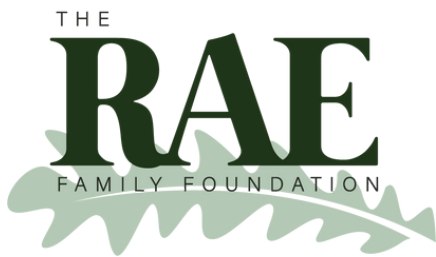
Your support is essential to providing hope and better outcomes for patients facing life-limiting cancers. To learn more about how you can transform patient care and outcomes, please get in touch—we'd be honoured to have you join us in this important mission.

Meg Croucher

Chief Executive Officer
admin@warpnine.org.au

Founding Supporters

WARPNINE is deeply grateful for the unwavering support and vision of our founding supporters. Their generosity has been crucial in transforming patient outcomes, enabling us to bridge the critical funding and research gaps in pancreatic, gastrointestinal, and rare cancers. Thanks to their belief in our mission, we have been able to accelerate access to cutting-edge clinical trials and innovative treatments, offering hope to patients where few options exist. The foundation they've laid is shaping a brighter future for those affected by these challenging diseases, and we extend our heartfelt appreciation for their pivotal role in making our mission a reality.





Our Supporters

WARPINE is grateful to have received generous support from the following individuals and organisations who made cumulative gifts of \$10,000 and above during the last two financial years.

Anonymous
 Carcione Foundation
 Chantelle Somas
 Coopers Foundation
 Fenchurch Insurance
 Jako Industries
 Jenaya and Richard Scragg
 Jillian and Ian Green
 John Carrigg

Kerimi Family Foundation
 Leivick Nominees Pty Ltd
 Lisata Therapeutics
 Terry Iannello
 The McCusker Charitable Foundation
 The Rae Family Foundation
 WAMO
 WA Limestone
 Zanda Architectural Hardware

We also extend our heartfelt thanks to our volunteers and community fundraisers – without you our work would not be possible.

Financial Statements

For the financial year ended June 30, 202



AUDITOR'S INDEPENDENCE DECLARATION

TO THE DIRECTORS OF WARPINE INCORPORATED

In accordance with the requirements of section 60-40 of the *Australian Charities and Not-for-profits Commission Act 2012*, as auditor for the audit of Warpine Incorporation for the year ended 30 June 2024, I declare that, to the best of knowledge and belief, there have been no contraventions of:

- the auditor independence requirements of *Australian Charities and Not-for-profits Commission Act 2012* the in relation to the audit; and
- any applicable code of professional conduct in relation to the audit.

Reliance Auditing Services

Reliance Auditing Services (WA) Pty Ltd

A handwritten signature in black ink that reads "Randeria".

Naz Randeria
Managing Director
Perth
11 October 2024



INDEPENDENT AUDITOR'S REPORT

To the Directors of Warpine Incorporated

Opinion

We have audited the financial report of Warpine Incorporated Ltd ('the Association'), which comprises the statement of financial position as at 30 June 2024, the statement of profit or loss and other comprehensive income, the statement of changes in equity, the statement of cash flows and notes to the financial statements, including a summary of material accounting policies and the Statement by the Board of Directors.

In our opinion, the accompanying financial report of the Company is in accordance with Division 60 of the *Australian Charities and Not-for-profits Commission Act 2012*, including:

- giving a true and fair view of the Company's financial position as at 30 June 2024 and of its financial performance for the year then ended; and
- complying with Australian Accounting Standards to the extent described in Note 2, and Division 60 of the *Australian Charities and Not-for-profits Commission Regulations 2022*.

Basis for Opinion

We conducted our audit in accordance with Australian Auditing Standards. Our responsibilities under those standards are further described in the *Auditor's Responsibilities for the Audit of the Financial Report* section of our report. We are independent of the Company in accordance with the ethical requirements of the Accounting Professional and Ethical Standards Board's APES 110 *Code of Ethics for Professional Accountants (including Independence Standards)* ('the Code') that are relevant to our audit of the financial report in Australia. We have also fulfilled our other ethical responsibilities in accordance with the Code.

We believe that the audit evidence we have obtained is sufficient and appropriate to provide a basis for our opinion.

Emphasis of Matter – Basis of Accounting

We draw attention to Note 1 to the financial report, which describes the basis of accounting. The financial report has been prepared for the purpose of fulfilling the Company's financial reporting responsibilities under the *Australian Charities and Not-for-profits Commission Act 2012* ('the ACNC Act'). As a result, the financial report may not be suitable for another purpose. Our opinion is not modified in respect of this matter.

Responsibilities of the Directors for the Financial Report

The Directors is responsible for the preparation of the financial report that gives a true and fair view and have determined that the basis of preparation described in Note 1 to the financial report is appropriate to meet the requirements of the ACNC Act and is appropriate to meet the needs of the members.

The Directors' responsibility also includes such internal control as Directors determine is necessary to enable the preparation of a financial report that gives a true and fair view and is free from material misstatement, whether due to fraud or error.

In preparing the financial report, the Directors is responsible for assessing the Company's ability to continue as a going concern, disclosing, as applicable, matters relating to going concern and using the going concern basis of accounting unless the Directors either intend to liquidate the Company or to cease operations, or has no realistic alternative but to do so.

The Directors is responsible for overseeing the Company's financial reporting process.

Auditor's Responsibilities for the Audit of the Financial Report

Our objectives are to obtain reasonable assurance about whether the financial report as a whole is free from material misstatement, whether due to fraud or error, and to issue an auditor's report that includes our opinion. Reasonable assurance is a high level of assurance, but is not a guarantee that an audit conducted in accordance with the Australian Auditing Standards will always detect a material misstatement when it exists.

Head Office

PO Box 767, West Perth WA 6872
Level 3 / 72 Kings Park Road, West Perth WA 6005

Melbourne

PO Box 670, North Melbourne VIC 3051

p 1300 291 060

e info@relianceauditing.com.au
w www.relianceauditing.com.au

Misstatements can arise from fraud or error and are considered material if, individually or in the aggregate, they could reasonably be expected to influence the economic decisions of users taken on the basis of this financial report.

As part of an audit in accordance with Australian Auditing Standards, we exercise professional judgment and maintain professional scepticism throughout the audit. We also:

- Identify and assess the risks of material misstatement of the financial report, whether due to fraud or error, design and perform audit procedures responsive to those risks, and obtain audit evidence that is sufficient and appropriate to provide a basis for our opinion. The risk of not detecting a material misstatement resulting from fraud is higher than for one resulting from error, as fraud may involve collusion, forgery, intentional omissions, misrepresentations, or the override of internal control.
- Obtain an understanding of internal control relevant to the audit in order to design audit procedures that are appropriate in the circumstances, but not for the purpose of expressing an opinion on the effectiveness of the Company's internal control.
- Evaluate the appropriateness of accounting policies used and the reasonableness of accounting estimates and related disclosures made by the Directors.
- Conclude on the appropriateness of the Directors' use of the going concern basis of accounting and, based on the audit evidence obtained, whether a material uncertainty exists related to events or conditions that may cast significant doubt on the Company's ability to continue as a going concern. If we conclude that a material uncertainty exists, we are required to draw attention in our auditor's report to the related disclosures in the financial report or, if such disclosures are inadequate, to modify our opinion. Our conclusions are based on the audit evidence obtained up to the date of our auditor's report. However, future events or conditions may cause the Company to cease to continue as a going concern.
- Evaluate the overall presentation, structure and content of the financial report, including the disclosures, and whether the financial report represents the underlying transactions and events in a manner that achieves fair presentation.

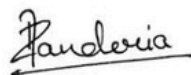
We communicate with the Directors, among other matters, the planned scope and timing of the audit and significant audit findings, including any significant deficiencies in internal control that we identify during our audit.

Independence

We confirm that the independence declaration required by the ACNC Act, which has been given to the Directors, would be the same terms if given to the Directors at the time of this auditor's report.

Reliance Auditing Services

Reliance Auditing Services (WA) Pty Ltd



Naz Randeria
Managing Director
Perth
11 October 2024

Warpnine Incorporated
Statement of Comprehensive Income

for the year ended 30 June 2024

	<i>Note</i>	2024	2023
		\$	\$
Income			
Donations		1,356,519	590,882
Interest Received		6,828	-
Total Income		1,363,348	590,882
Expenditure			
Accounting & Bookkeeping		1,080	990
Advertising & Marketing		66	5,946
Auditor Fees		3,200	3,200
Clinical Trial Expenses		298,296	116,412
Computer & IT Expenses		215	-
Entertainment		144	438
Freight, Courier & Postage		736	666
Workers Compensation Insurance		1,190	1,206
Legal Fees		-	603
Office Supplies		612	846
Wages & Salaries - Operational		77,933	158,574
Annual Leave Expense		1,210	19,315
Superannuation		21,320	16,868
Parking & Taxis		480	412
Printing & Stationery		1,794	3,132
Subscriptions & Memberships		6,307	2,652
Telephone & Internet		1,225	580
Travel & Accommodation		5,577	-
Total Expenses		421,386	229,135
Operating surplus for the year		941,962	259,042
Other Comprehensive Income		-	-
Total Comprehensive Income for the year		941,962	259,042

This statement should be read in conjunction with the notes to the financial statements.
 Full audited report available via the ACNC website.

Warpnine Incorporated
Statement of Financial Position

As at 30 June 2024

	<i>Note</i>	2024	2023
		\$	\$
Current Assets			
Cash at Bank		1,753,258	823,041
Prepayments		5,610	6,658
Accrued Income		6,828	-
Total Current Assets		1,765,696	829,699
Total Assets		1,765,696	829,699
Current Liabilities			
Other Creditors		3,463	10,639
Provisions		20,525	19,314
Total Current Liabilities		23,988	29,953
Total Liabilities		23,988	29,953
NET ASSETS		1,741,708	799,746
Funds retained		1,741,708	799,746
TOTAL EQUITY		1,741,708	799,746

This statement should be read in conjunction with the notes to the financial statements.
 Full audited report available via the ACNC website.

Warpnine Incorporated
Statement of Changes in Equity

for the year ended 30 June 2024

	Note	2024 \$	2023 \$
Balance at 1 July		799,746	540,704
Operating surplus for the year		941,962	259,042
Balance at 30 June		1,741,708	799,746

This statement should be read in conjunction with the notes to the financial statements.
Full audited report available via the ACNC website.

Warpnine Incorporated
Statement of Cash Flows

for the year ended 30 June 2024

	Note	2024 \$	2023 \$
Cashflow from Operating Activities			
Receipts from donations		1,356,519	590,882
Payments to suppliers and employees		(253,213)	(211,564)
Funding contributions		(173,090)	(102,705)
Net cash flows from operating activities	3	930,217	276,613
Net Increase/(decrease) in cash and cash equivalents		930,217	276,613
Cash and cash equivalents at the beginning of year		823,041	546,428
Cash and cash equivalents at the end of year		1,753,258	823,041

This statement should be read in conjunction with the notes to the financial statements.
 Full audited report available via the ACNC website.

Notes to the Financial Statements:**Cash at Bank:**

The cash balance as of 30 June 2024 is comprised of committed funds allocated to the iLSTA and NEO-GOLSTA clinical trials, which aim to improve treatment options and outcomes for pancreatic and gastro-oesophageal cancers. These funds are dedicated to furthering our mission, ensuring that donations are effectively directed towards these essential clinical projects.

Wages and Salaries - Operational:

The variation in wage expenses over the past two years reflects a change in categorisation. In the prior year, operational wages were not distinguished from wages directly linked to program delivery. This classification error has been corrected in the current financial year, as validated by our auditors. This distinction provides greater transparency, clearly demonstrating that resources are being allocated efficiently towards WARPINE's objectives.

With Heartfelt Gratitude

We extend our deepest thanks for your unwavering support of WARPnine. Your generosity fuels our mission to improve outcomes for those affected by pancreatic, gastrointestinal, and rare cancers. Together, we are making a lasting difference, offering hope and advancing care for those who need it most. Thank you for standing by us on this important journey.



Charging at warp speed to find the cancer treatments of the future!

www.warpline.org.au

admin@warpline.org.au

0406 818 810

ABN: 25 683 900 655

Charitable Collections License: 23030